

## ACCESSORIES ROSSLARE

**MD-08B** - Programming Interface for Smartcard Readers



## Wireless Door Interface

**MD-W11** - Wireless door interface

The MD-W11 is a quick and inexpensive solution to connect remote door devices, such as readers, locks and REX Buttons to an access control unit. The unit utilizes bidirectional RF data communication to relay Wiegand 26-bit reader communication, lock and door relay commands as well as tamper, door monitor and REX messages between the controller and the interface unit. The interface is based on two units per door, one located near the controller and the other near the door



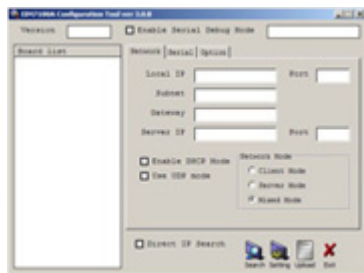
## Communications Gateways and Adapters

**MD-N32** - TCP/IP to RS-232 Gateway

**MD-N33** - Serial RS-232 to PSTN Adapter (Modem)

**MD-14** - RS-232 to RS-485 Converter

**MD-08** - Wiegand 26-Bit to RS-232 Output converter



**MD-N32**



**MD-N33**



**MD-14**

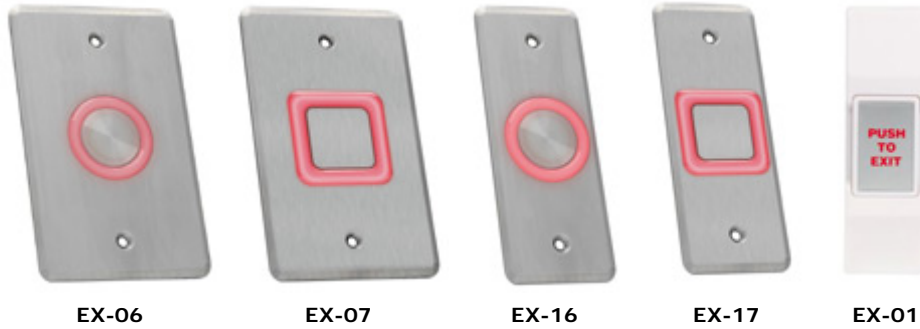


**MD-08**

## Audio Alert Units

## REX Buttons

- EX-06** - Analog Piezo REX switch with toggle option
- EX-16** - Analog Mullion size Piezo REX switch with toggle option
- EX-07** - Digital Piezo REX switch
- EX-17** - Digital Mullion size Piezo REX switch
- EX-01** Push-for-Exit Button



## Mounting Peripherals

- MP-K01** - Mount Spacer for K-Type Readers
- MP-J01** - Mount Spacer for J-Type Readers
- MP-C02** - Flush-Mount Housing for C-Type Keypads
- MP-G02** - Flush-Mount Housing for G-Type Readers and Keypads



## Keypad Covers

- EX-D01** - Brushed Stainless Steel Metal Cover
- EX-D02** - Brass / Gold Plated Cover
- EX-D03** - Shiny Nickel / Silver Plated Cover

